



Rectangular Duct Fan

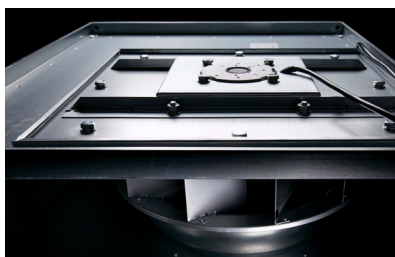
The RDF is a duct fan with high capacity, low noise and excellent reliability.

COPRA AS
Trohaugen 1
N-6393 Tomrefjord

Org nr: 921 074 433 MVA

Mobile: + 47 974 30 173
office@copra.no
copra.no

NOTE:



The rectangular duct fan is normally used as an exhaust fan and it can extract polluted indoor air and transport it for long distances. This makes it ideal for large ships, hotels, clubs, restaurants, offices and other places which requires exhaust air.

Our company's product is designed to make the fan as effective as possible. The dimensions of inlet and outlet is according to the standard ventilation pipes on the market today, and it can be directly connected to the pipes. This makes the installation process very simple.

The duct fan is compact in size, with low weight, low noise, long life and high efficiency.

See drawings and specifications on request.



Model	Airflow <i>m³/h</i>	Static	Speed <i>Rpm</i>	Noise <i>dB</i>	Voltage <i>V</i>	Frequency <i>Hz</i>	Weight <i>Kg</i>
		Pressure <i>Pa</i>					
500x250	2273	332	1398	51	230	50	22,5
500x300	2418	378	1435	62	230	50	27,3
600x350	3383	565	1430	66	230	50	39,8

* Can also be used with 60 Hz input, please contact us for specifications

